

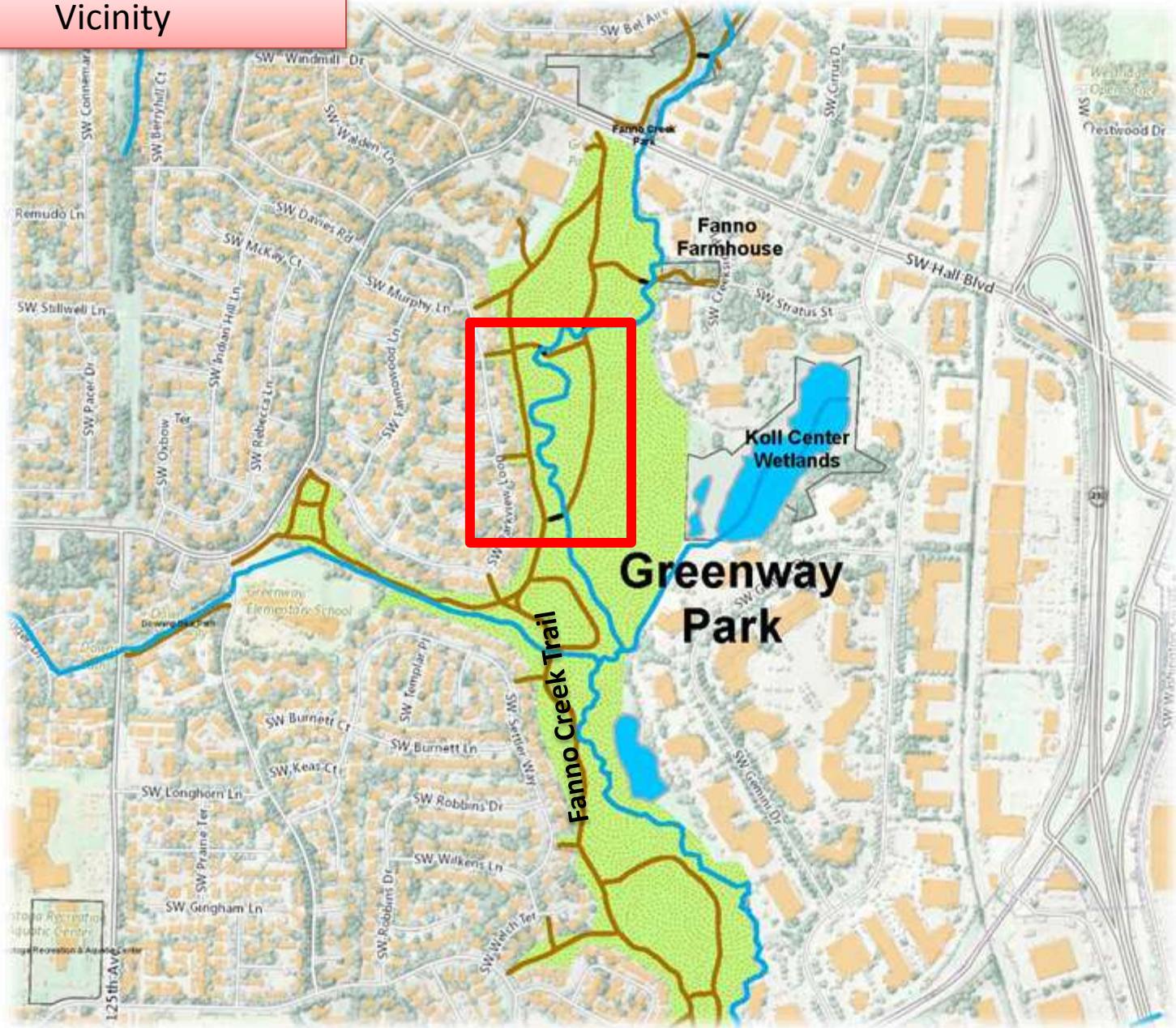
# Greenway Park Access Options



Beaver activity in the center of Greenway Park has caused a portion of a loop trail, off the main Fanno Creek Trail, to be flooded year round. The entire park is in a mapped flood plain.

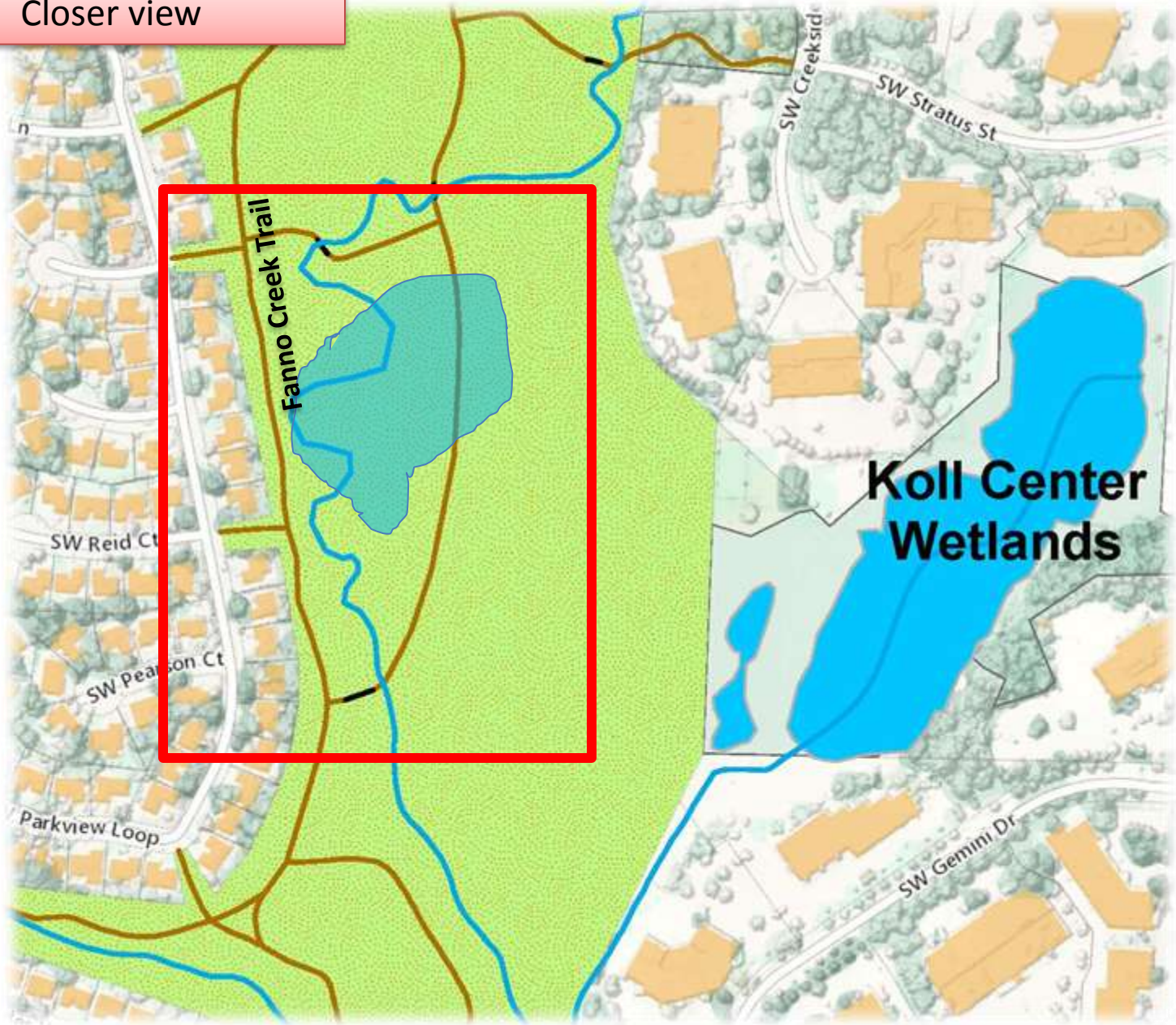
This presentation shows options for public access.

Vicinity





Closer view

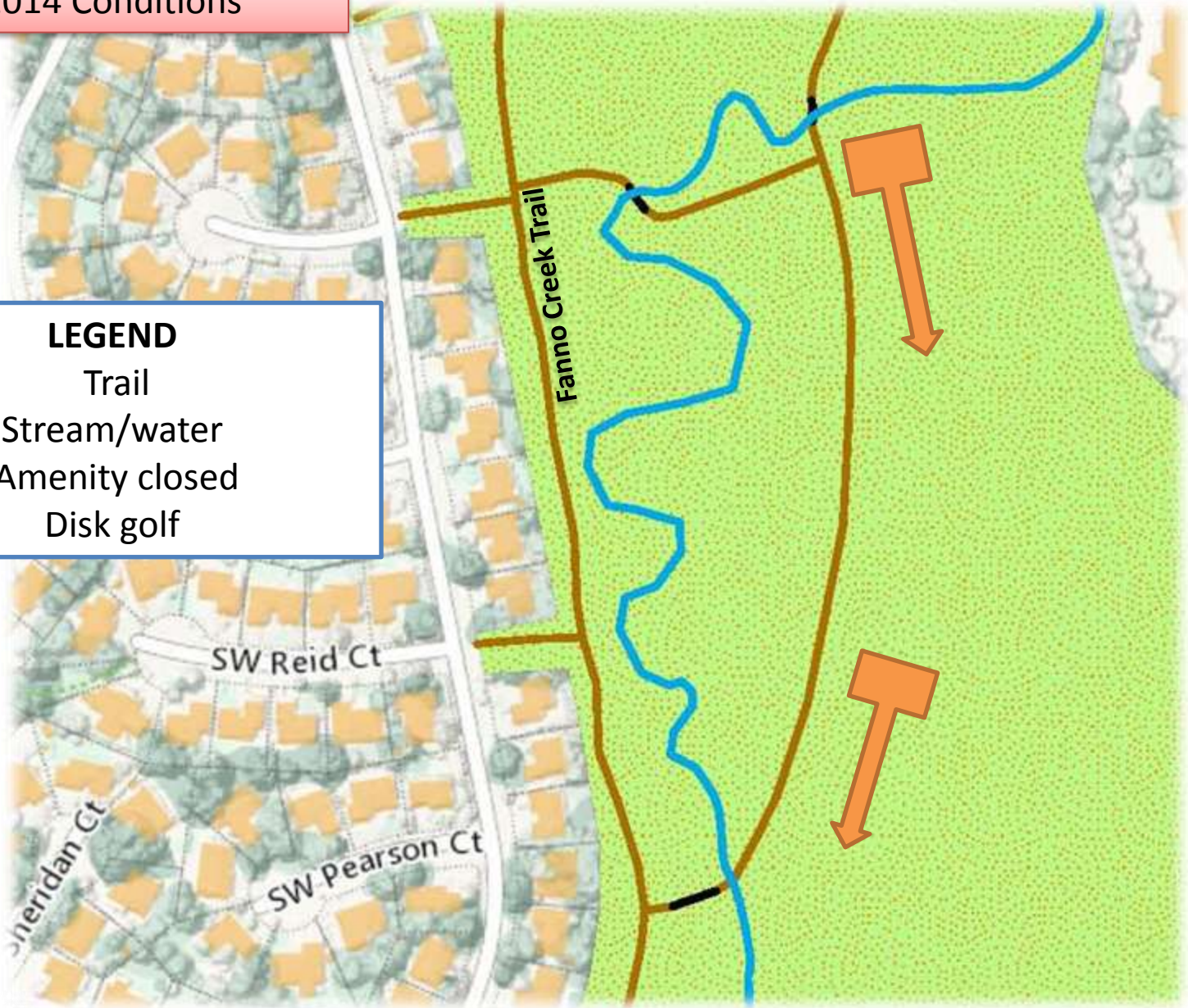




2014 Conditions

**LEGEND**

- Trail
- Stream/water
- Amenity closed
- Disk golf

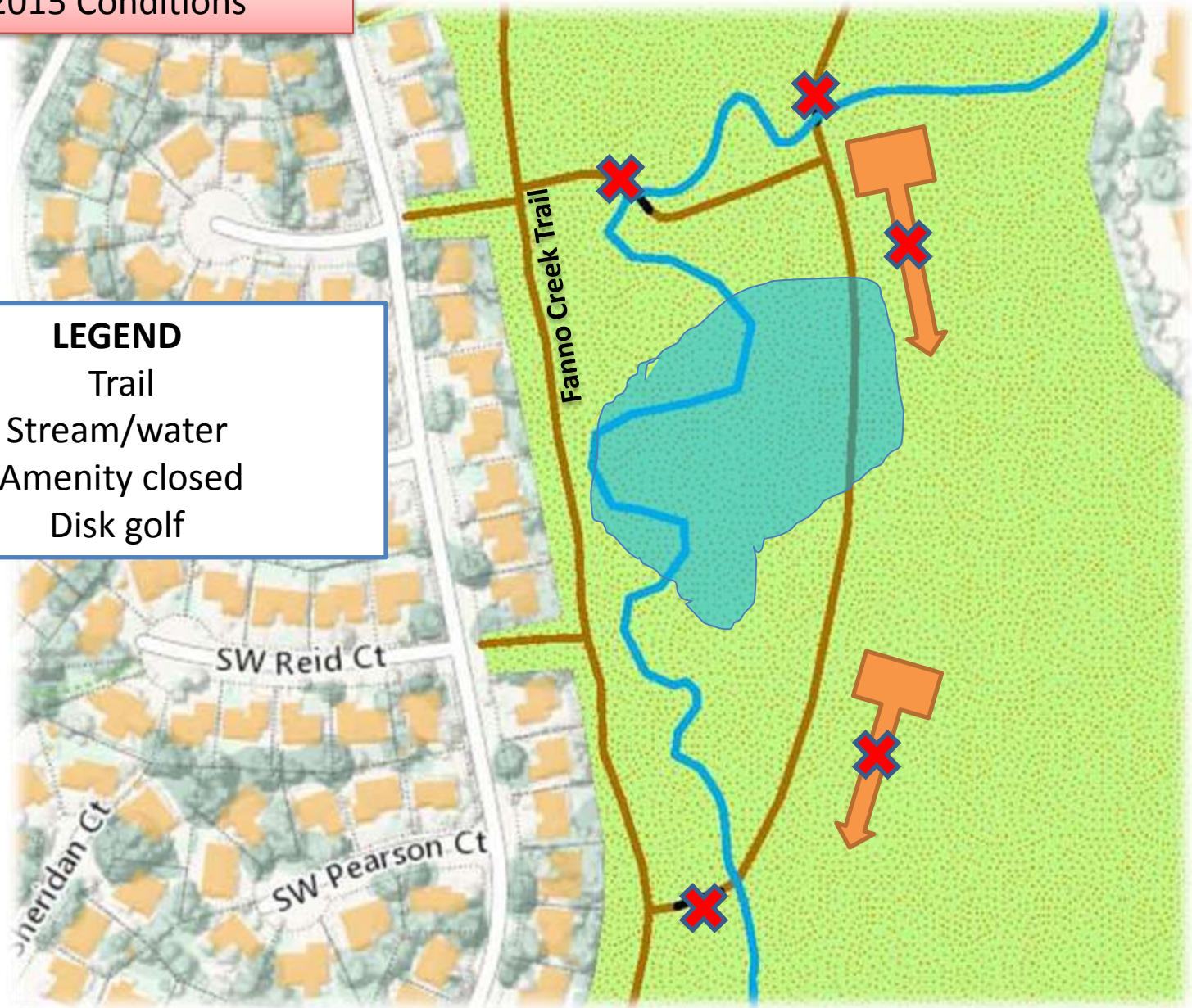




2015 Conditions

**LEGEND**

- Trail
- Stream/water
- Amenity closed
- Disk golf



# Access Options

The options that follow show a range of possible access. Each one has benefits and costs for park district residents, staff, or wildlife.

Because the beaver population in the region is so large, if a beaver is removed from the property, another one will replace it in a short time. Therefore beaver removal is not an action that is or will be considered.

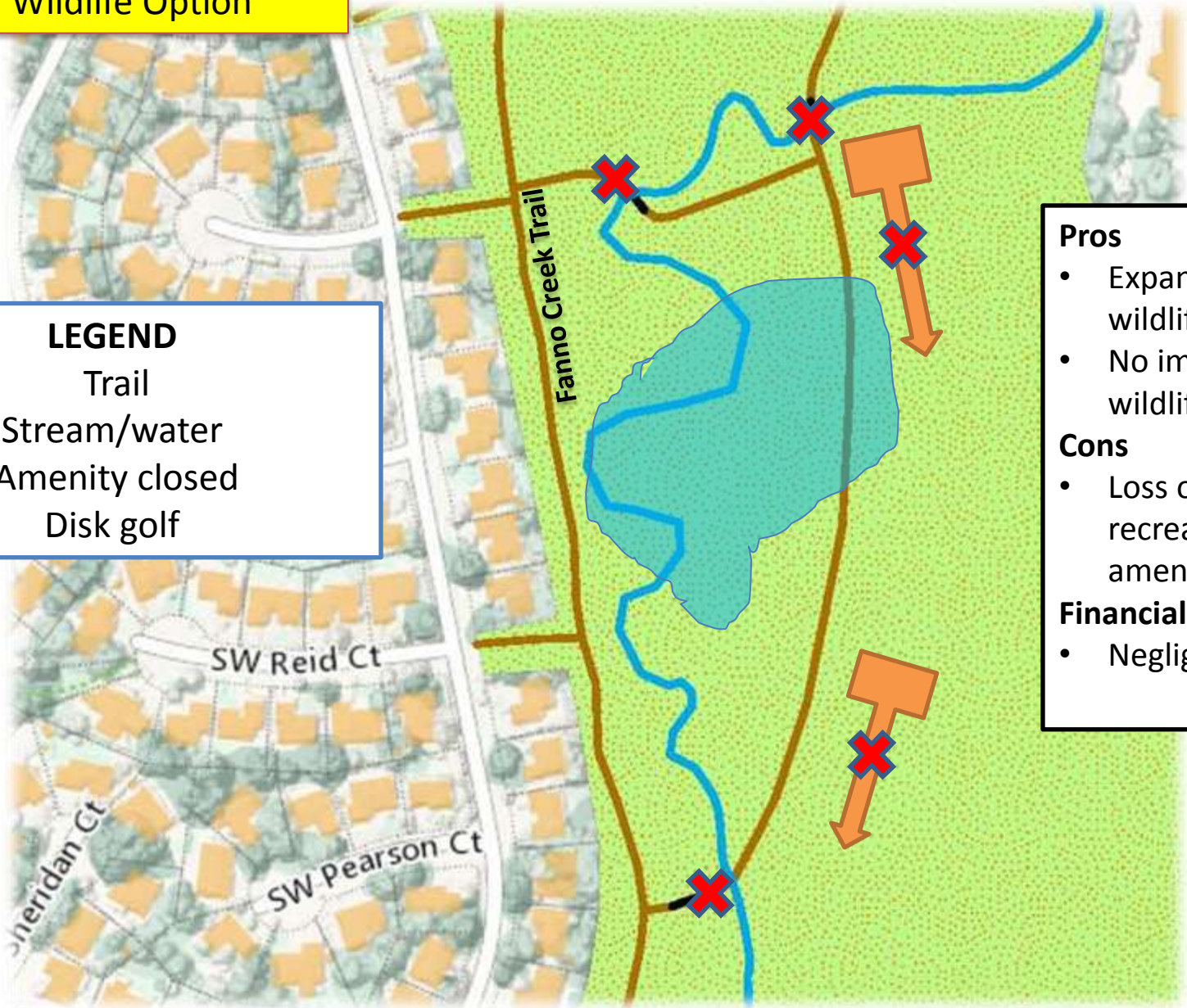
Under the second and third options, it may be possible to use a water management device (inserted through a beaver dam) to lower the water levels during low-flow seasons, which could provide for additional recreation space.



# 1. Wildlife Option

**LEGEND**

- Trail
- Stream/water
- Amenity closed
- Disk golf



**Pros**

- Expands wildlife habitat.
- No impact to wildlife.

**Cons**

- Loss of recreation amenities.

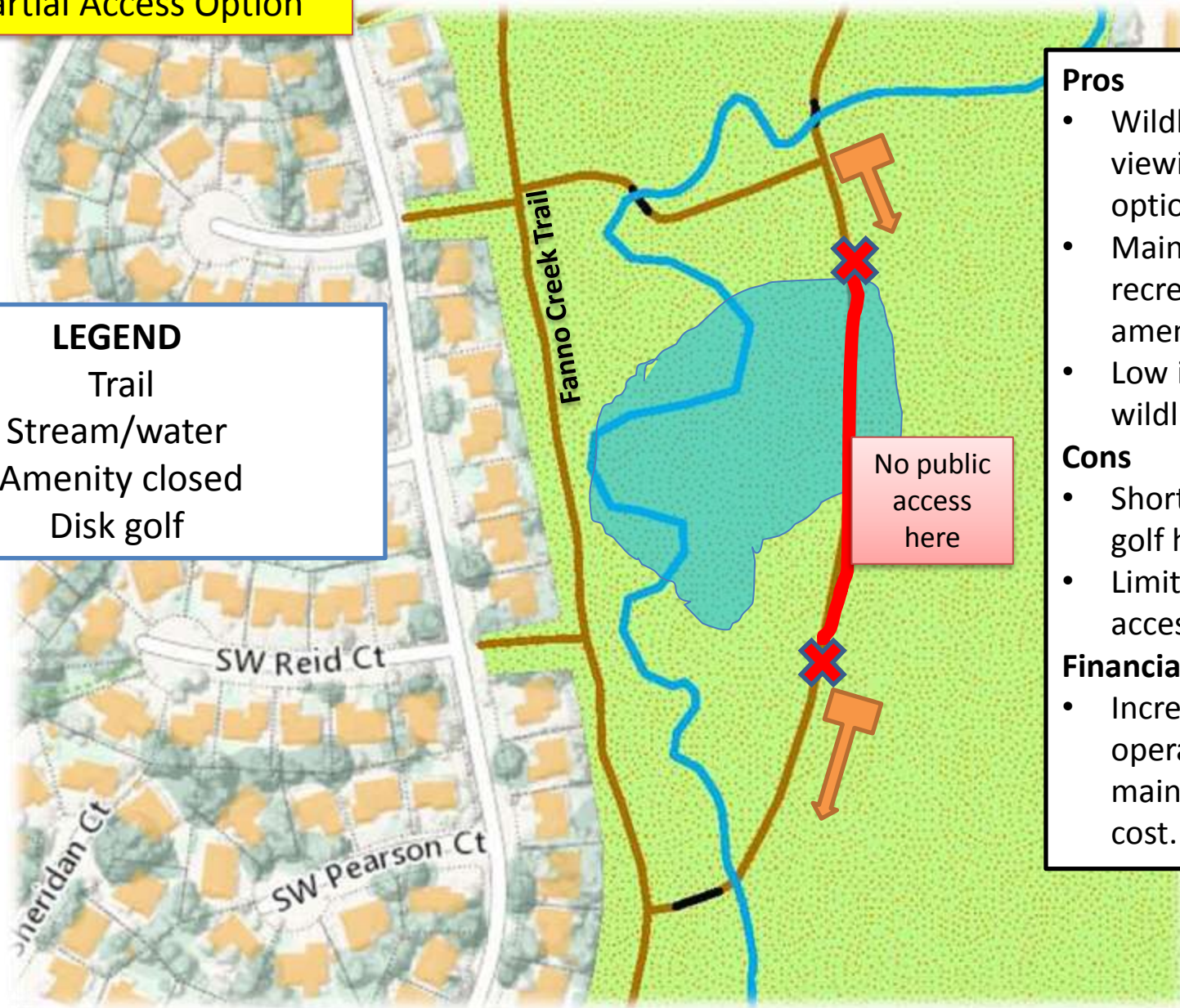
**Financial cost**

- Negligible.

## 2. Partial Access Option

### LEGEND

- Trail
- Stream/water
- Amenity closed
- Disk golf



### Pros

- Wildlife viewing options.
- Maintains most recreation amenities
- Low impact to wildlife.

### Cons

- Shortened disc golf holes.
- Limits path access.

### Financial cost

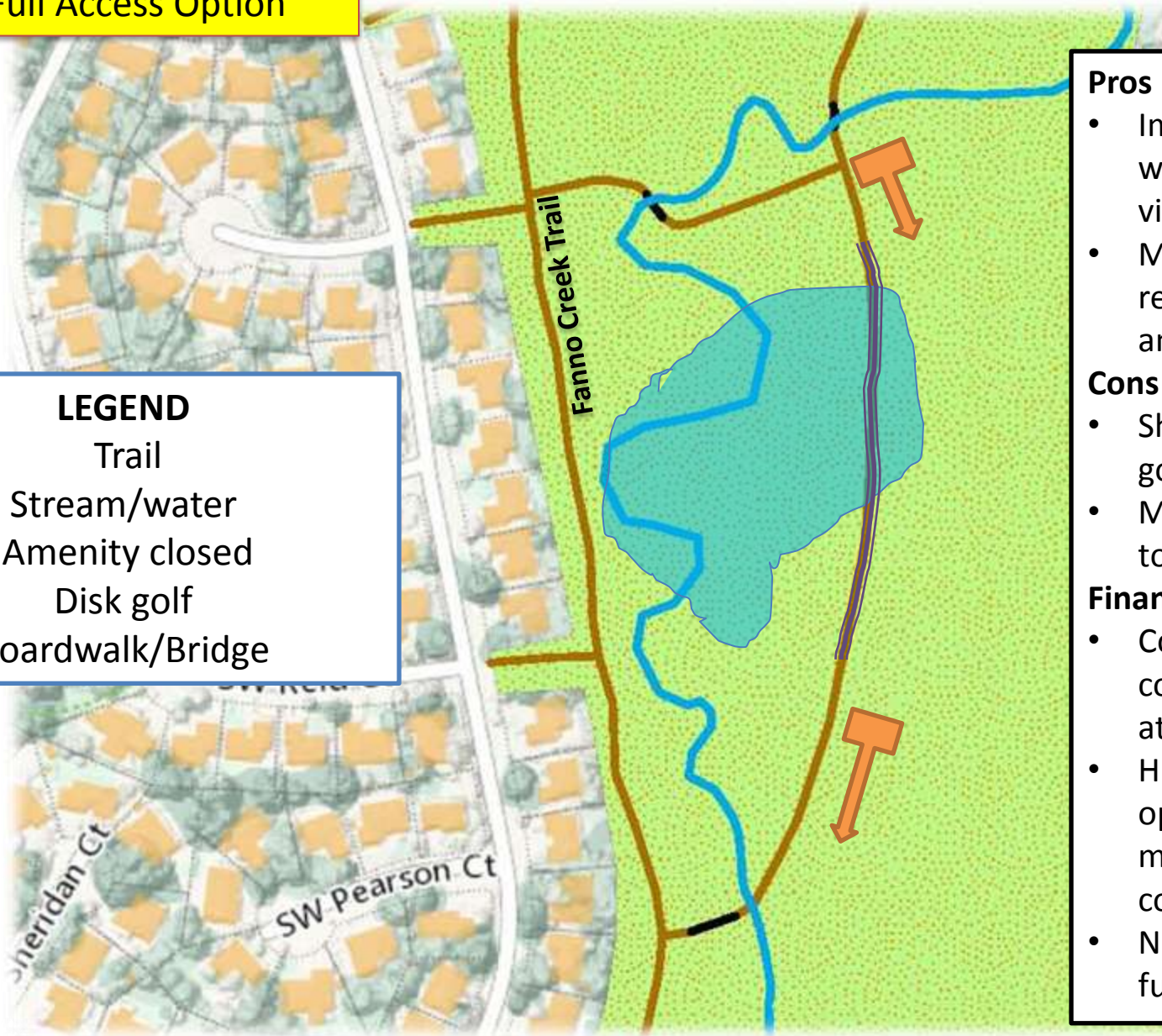
- Increased staff operating and maintenance cost.



### 3. Full Access Option

**LEGEND**

- Trail
- Stream/water
- Amenity closed
- Disk golf
- Boardwalk/Bridge



- Pros**
- Improved wildlife viewing.
  - Maintains all recreation amenities.
- Cons**
- Shortened disc golf holes.
  - Minor impact to wildlife.
- Financial cost**
- Construction cost estimated at \$600,000
  - High staff operating and maintenance cost.
  - No current funding.